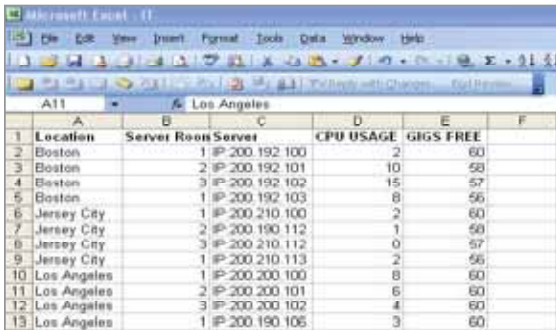


SmartMoney MAP APPLET

For more information, contact 212-373-9460 or licensinginfo@smartmoney.com

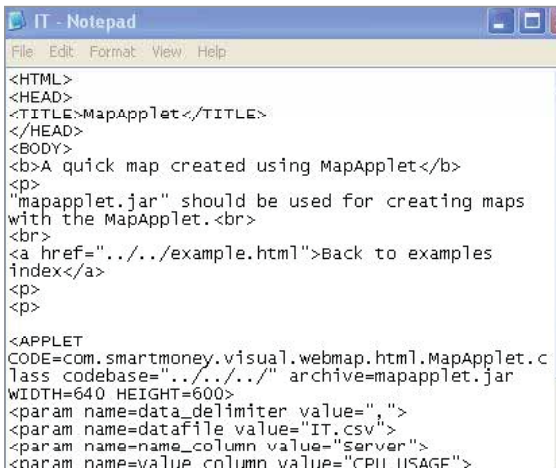
SmartMoney.com's portable **Map Applet** allows non-programmers to create an infinite variety of maps for optimal visualization of any data set. Like all java applets, it can perform interactive actions, immediate calculations, or other simple tasks without having to send a user request back to the server. Map Applet brings you the advantages of highly customized Java applet with the ease of HTML programming. This portable solution gives you the ability to easily customize the map to suit your company's specific needs while maintaining the look and feel of your website.

APPLET FEATURES



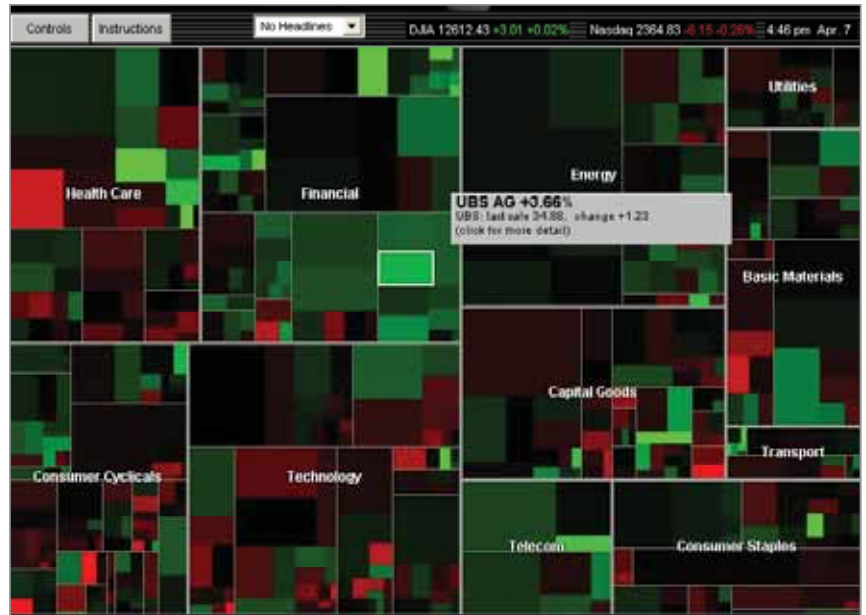
	A	B	C	D	E	F
1	Location	Server	Room	Server	CPU USAGE	GIGS FREE
2	Boston	1	IP	200.192.100	2	60
3	Boston	2	IP	200.192.101	10	58
4	Boston	3	IP	200.192.102	15	57
5	Boston	1	IP	200.192.103	8	56
6	Jersey City	1	IP	200.210.100	2	60
7	Jersey City	2	IP	200.190.112	1	59
8	Jersey City	3	IP	200.210.112	0	57
9	Jersey City	1	IP	200.210.113	2	56
10	Los Angeles	1	IP	200.200.100	8	60
11	Los Angeles	2	IP	200.200.101	6	60
12	Los Angeles	3	IP	200.200.102	4	60
13	Los Angeles	1	IP	200.190.106	3	60

Data is fed into a Pipe Delimited Text, Excel, or CSV middleware file from virtually any database.



```
<HTML>
<HEAD>
<TITLE>MapApplet</TITLE>
</HEAD>
<BODY>
<b>A quick map created using MapApplet</b>
<p>
"mapapplet.jar" should be used for creating maps
with the MapApplet.<br>
<br>
<a href="../../example.html">Back to examples
index</a>
<p>
<p>
<APPLET
CODE=com.smartmoney.visual.webmap.html.MapApplet.c
lass codebase="../../.." archive=mapapplet.jar
WIDTH=640 HEIGHT=600>
<param name=data_delimiter value=",">
<param name=datafile value="IT.csv">
<param name=name_column value="server">
<param name=value_column value="CPU_USAGE">
```

Parameters are set within the configuration file using HTML to specify map size, color, drop down menus etc.



Data comes to life in the SmartMoney Map Applet with the capability to show virtually any comparative data set including:

- Global Market Data from any exchange (real time streaming quote capabilities are available)
- Internal sales information
- IT infrastructure monitoring
- Any other proprietary data set

For a free 30 day trial of the Map Applet use the contact information on the top of this page.